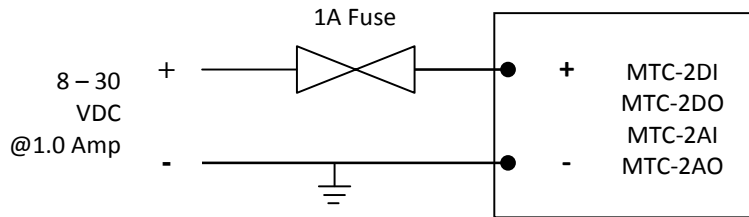
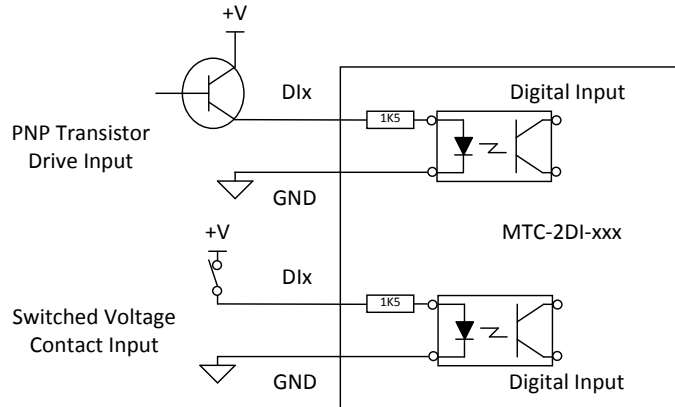


MTC IO Controller : Quick Installation Guide

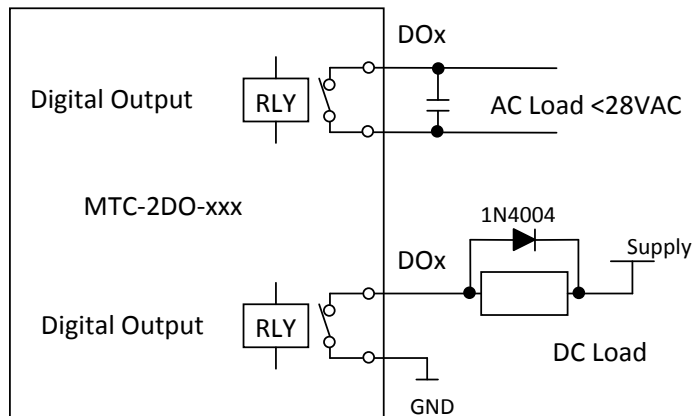
Power Supply : 9 to 30VDC @ 1.0 Amp



Digital Input Connection : Min 5mA wetting current



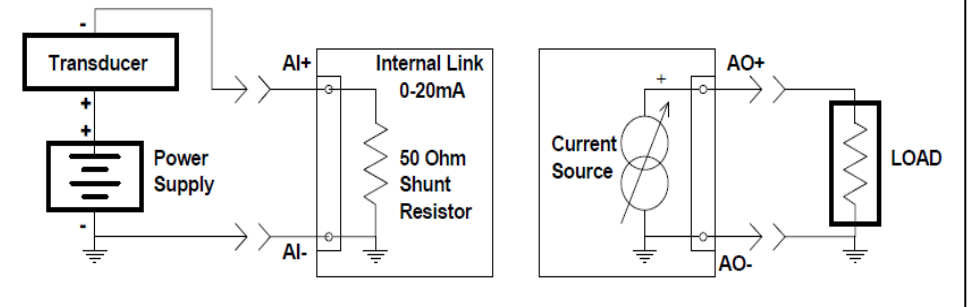
Digital Output Connection : Max 30VDC@1A / 125VAC@1A



Please note: printed user manuals are not provided with this equipment. Please visit www.embeddedcomms.com to download the latest manual.

Enclosures: The MTC module is supplied in an extruded aluminium enclosure. If the module is to be used outdoors it should be mounted in a suitable IP rated enclosure to protect it from harsh external elements, dust and moisture.

Optional - Analog IO Connection : 0-20mA input and output.



Antenna Installation : External dipole antenna

Note: For optimum range and operational performance, ensure antennas are mounted vertically, above obstructions and in direct line of sight with other antennas.

